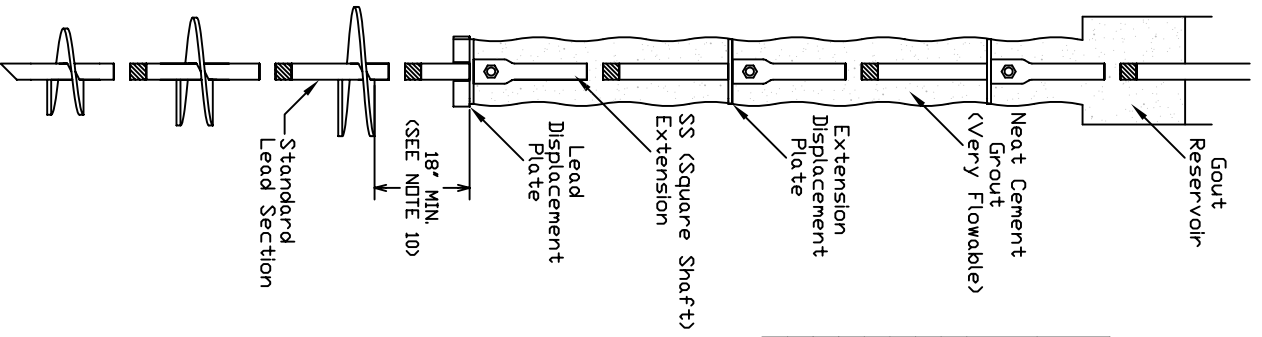


# HELICAL PULLDOWN<sup>®</sup> MICROPILE

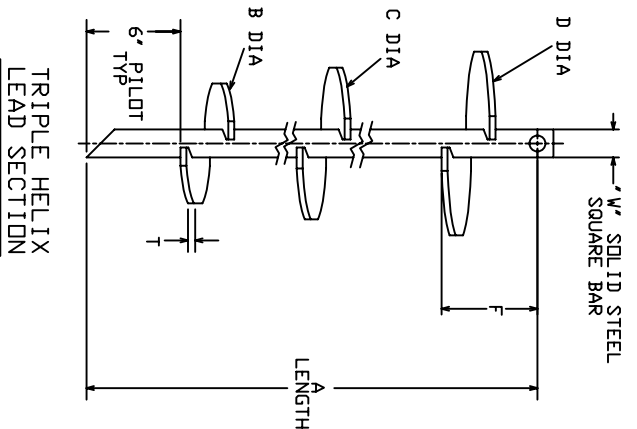
## LEAD SECTIONS



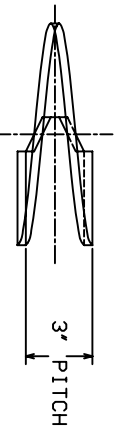
		LEAD SECTION									
CAT. NO.	SHAFT MATERIAL	TYPICAL RATING (FT-LB)	A	B	C	D	F	W	T	HELIX STEEL GRADE	
C150-0397	SSS	5500	82.25'	8'	10'	12'	22.25'	1.5'	.375'	50	
C150-0398	SSS	5500	123'	10'	12'	14'	51'	1.5'	.375'	50	
C150-0399	SSS	5500	123'	12'	14'	16'	39'	1.5'	.375'	50	
C150-0400	SS150	7000	82.25'	6'	8'	10'	34.25'	1.5'	.375'	80	
C150-0401	SS175	11000	83'	8'	10'	12'	23'	1.75'	.375'	80	
C150-0402	SS175	11000	129'	10'	12'	14'	57'	1.75'	.375'	80	
C150-0403	SS200	16000	85'	8'	10'	12'	25'	2.0'	.5'	80	
C150-0404	SS200	16000	131'	10'	12'	14'	59'	2.0'	.5'	80	

==NOTES==

1. HOT DIP GALVANIZED PER ASTM A153-(LATEST REVISION).
2. LEAD AND EXTENSION SECTION LENGTHS AND HELIX SPACINGS ARE NOMINAL. NOMINAL SPACING BETWEEN HELIX PLATES IS THREE TIMES THE DIAMETER OF THE LOWER HELIX.
3. SHAFT MATERIAL-HOT ROLLED ROUND-CORNERED SQUARE (RCS) SOLID STEEL BARS ASTM A29 MINIMUM YIELD STRENGTH=70 KSI (SSS), 90 KSI (SS150, SS175, SS200).
4. HELIX MATERIAL-HOT ROLLED LOW CARBON STEEL SHEET, STRIP, OR PLATE PER ASTM A572, OR A1018, OR A656.
5. MANUFACTURER TO HAVE IN EFFECT INDUSTRY RECOGNIZED WRITTEN QUALITY CONTROL FOR ALL MATERIALS AND MANUFACTURING PROCESSES.
6. ALL WELDING TO BE DONE BY WELDERS CERTIFIED UNDER SECTION 5 OF THE AWS CODE D1. 1.
7. REFER TO SA150-0047 FOR SSS PLAIN EXTENSION AND TERMINATIONS.
8. REFER TO SA150-0144 FOR SS150 PLAIN EXTENSION AND TERMINATIONS.
9. REFER TO SA150-0183 FOR SS175 PLAIN EXTENSION AND TERMINATIONS.
10. REFER TO SA150-0330 FOR LEAD AND EXTENSION DISPLACEMENT PLATES.
11. REFER TO SA150-0338 FOR CASED LEAD AND EXTENSION DISPLACEMENT PLATES. HELICES ON THE C150-0397, C150-0398, AND C150-0399 HAVE A SHARPENED LEADING EDGE.
12. STANDARD SQUARE SHAFT SECTIONS CAN BE USED PROVIDED HELIX TO LEAD DISPLACEMENT PLATE SPACING OF 18" MIN. IS MAINTAINED.



TYPICAL UNCASED APPLICATION



CHANCE		<b>HUBBELL POWER SYSTEMS</b>	
CONFIDENTIAL. THIS DRAWING AND ITS CONTENTS ARE CONFIDENTIAL AND THE CONTENTS ARE NOT TO BE REPRODUCED, COPIED, DISTRIBUTED OR COPIES MAY BE MADE WITHOUT THE WRITTEN PERMISSION OF HUBBELL POWER SYSTEMS. UNPUBLISHED CONTENTS RESERVED UNDER THE PATENT LAWS.		TITLE <b>HELICAL PULLDOWN MICROPILE</b>	
SIZE CAT / PART / ASSY NO.	DO NOT SCALE THIS DRAWING	DATE 4/26/05	SHEET 1/1