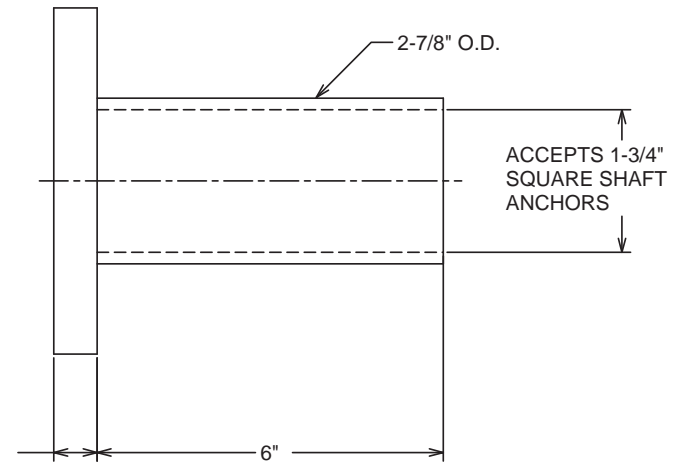
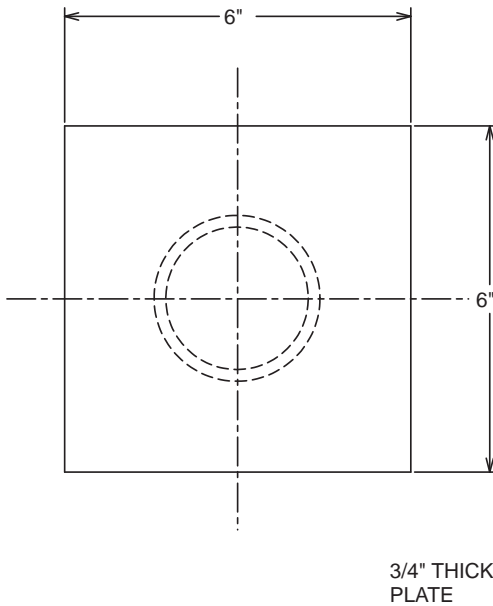


INSTALLATION CONCEPT OF  
PIER CAP DETAIL



==NOTES==

1. FINISH: MILL FINISH STEEL.
2. MATERIAL SPECIFICATIONS:  
PIPE: STEEL TUBE, ROUND, PER ASTM A500 GRADE B.  
PLATE: PER ASTM A36.
3. RATING: 30 TON COMPRESSION WORKING/DESIGN LOAD.  
THIS RATING IS VALID ONLY IF THE PIER CAP DETAIL  
HAS BEEN DESIGNED TO ENSURE ADEQUATE LOAD TRANSFER  
FROM REINFORCED CONCRETE FOUNDATION TO SCREW PIER, AND  
IN ACCORDANCE WITH EXISTING LOCAL CODE REQUIREMENTS AND /OR  
ESTABLISHED LOCAL PRACTICES.

CATALOG NUMBER  
C150-0459

LATEST EC NO.	REV.	DATE	CHANGED BY	RESP ENGINEER
04807	A	05/24/02	JOBE	BEARD
PIER CAP, FOR NEW CONSTRUCTION				
MARTIN	02-28-02			



POWER SYSTEMS, INC.



DWG NO:  
SA150-0459

CONFIDENTIAL - THIS DRAWING AND ITS CONTENTS ARE CONFIDENTIAL AND THE EXCLUSIVE PROPERTY OF HUBBELL POWER SYSTEMS, INC. NO PART OF THIS DRAWING OR ANY INFORMATION CONTAINED HEREIN MAY BE REPRODUCED OR TRANSMITTED IN ANY FORM OR BY ANY MEANS, WITHOUT WRITTEN PERMISSION BY HUBBELL POWER SYSTEMS, INC. © 2002 HUBBELL/A.B. CHANGE. UNPUBLISHED - ALL RIGHTS RESERVED UNDER THE COPYRIGHT LAWS