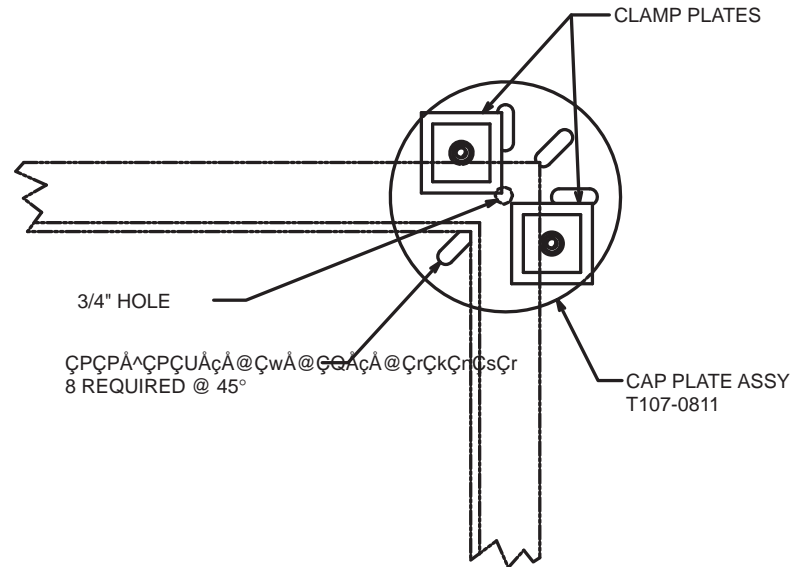
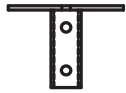


T107-0811
CAP PLATE DETAIL
4-11/16" TO 7-5/16" BOLT CIRCLE



3/4" HOLE
8 REQUIRED @ 45°

CLAMP PLATES
CAP PLATE ASSY
T107-0811

==NOTES==

1. HOT DIP GALVANIZED PER ASTM A153-(LATEST REV.).
2. NOMINAL SPACING BETWEEN HELIX PLATES IS THREE TIMES THE DIAMETER OF THE LOWER HELIX.
3. SHAFT MATERIAL PER ASTM A29.
4. HELIX AND PLATE MATERIAL PER GENERAL REQUIREMENT OF AISI HOT ROLLED STEEL SHEET.
5. COUPLING BOLT: 3/4" DIAMETER X 3.00" LONG HEX HEAD PER ASTM - A320 GRADE L-7.
6. MANUFACTURER TO HAVE IN EFFECT INDUSTRY RECOGNIZED WRITTEN QUALITY CONTROL FOR ALL MATERIALS AND MANUFACTURING PROCESSES.
7. ALL WELDING TO BE DONE BY WELDERS CERTIFIED UNDER SECTION 5 OF THE AWS CODE D1.1.
8. EXTENSIONS MUST BE PROVIDED WITH A HOT FORGE EXPANDED INTERGRAL COUPLING CONNECTION ON ONE END.

MECHANICAL RATING:

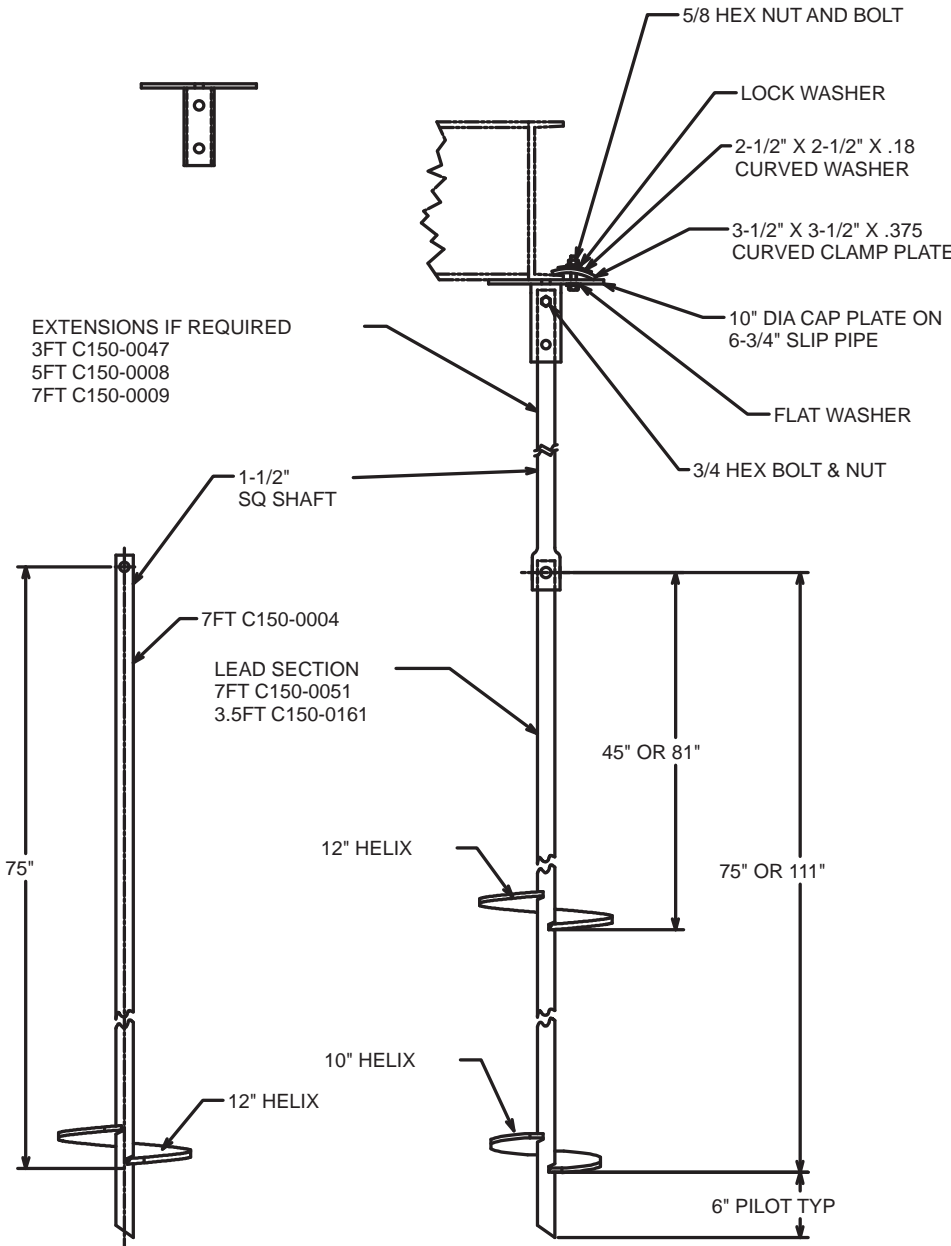
TORQUE: 5,000 FT-LB
AXIAL LOAD: 10,000 LBS

SIDE LOAD RATING IN SOIL*:

SIDE LOAD: 420 LB, APPLIED 6 INCHES ABOVE GRADE

*SIDE LOAD RATING ASSUMES:

- WATER TABLE BELOW FOUNDATION
- 2 TO 1 SAFETY FACTOR
- MINIMUM BLOW COUNT SOIL OF 4 PER ASTM D1586
- 5 FT MINIMUM SHAFT LENGTH IN CLAY
- 8 FT MINIMUM SHAFT LENGTH IN SAND



EXTENSIONS IF REQUIRED
3FT C150-0047
5FT C150-0008
7FT C150-0009

LEAD SECTION
7FT C150-0051
3.5FT C150-0161

45" OR 81"
75" OR 111"

12" HELIX

10" HELIX

12" HELIX

6" PILOT TYP

LATEST EC NO:	REV:	DATE:	CHANGED BY:	RESP ENGINEER:
EC01207	A	11-30-99	MARTIN	HOYT

QUALLS	1/26/99	FOUNDATION, COMMUNICATION SYSTEM	
		SA150-10018	