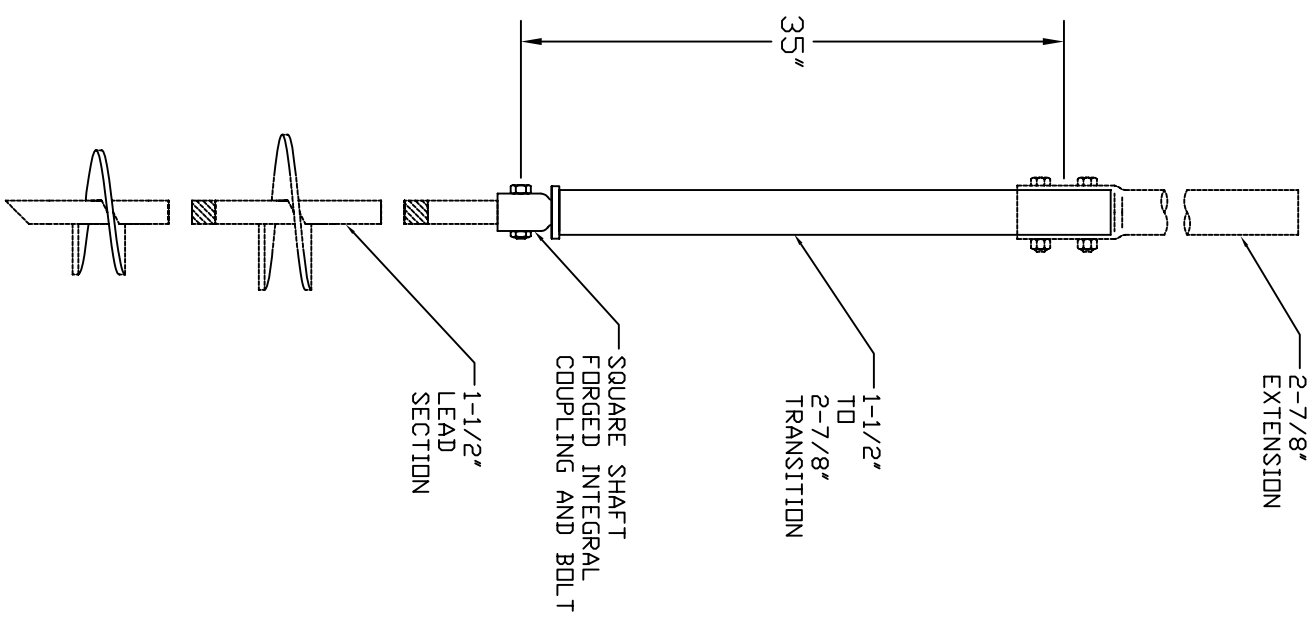


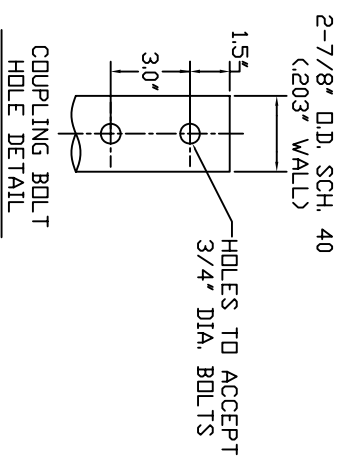
RS2875.203 TRANSITION

TORQUE STRENGTH RATING-5,500 FT-LB  
 ULTIMATE TENSION & COMPRESSION STRENGTH-60 KIP



- NOTES-
1. HOT DIP GALVANIZED PER ASTM A153-(LATEST REVISION) C278-0150 ONLY
  2. PIPE SHAFT MATERIAL 2.5" NOMINAL, SCHEDULE 40 WALL THICKNESS PER ASTM A500 GRADE B.
  3. MANUFACTURER TO HAVE IN EFFECT INDUSTRY RECOGNIZED WRITTEN QUALITY CONTROL FOR ALL MATERIALS AND MANUFACTURING PROCESSES.
  4. ALL WELDING TO BE DONE BY WELDERS CERTIFIED UNDER SECTION 5 OF THE AWS CODE D1.1.
  5. REFER TO SA278-4500 FOR 2-7/8" EXTENSIONS.
  6. REFER TO SA150-0001 OR SA150-10013 FOR 1-1/2" LEAD COUPLING BOLTS; 3/4" DIAMETER X 3" LONG HEX HEAD PER ASTM A320 GRADE L7.
  7. TRANSITION SECTION LENGTH IS NOMINAL.

| CAT. NO.    | DESCRIPTION                     |
|-------------|---------------------------------|
| C278-0150   | RS2875.203 TRANSITION, GALV.    |
| C278-0150NG | RS2875.203 TRANSITION, NON-GALV |



|  |  |   |  |
|--|--|---|--|
| CHANCE   |  |   |  |
| CONFIDENTIAL: THIS DRAWING AND ITS CONTENTS ARE THE EXCLUSIVE PROPERTY OF HUBBELL POWER SYSTEMS, INC. NO REPRODUCTION OR DISSEMINATION OF ANY PART OF THIS DRAWING IS TO BE MADE WITHOUT THE WRITTEN PERMISSION OF HUBBELL POWER SYSTEMS, INC. HUBBELL POWER SYSTEMS UNPUBLISHED COPYRIGHT LAWS. |  | HUBBELL POWER SYSTEMS<br>TITLE: 1-1/2" to 2-7/8" TRANSITION<br>SIZE: DIMG NO. SCSA278-0150<br>TO USE SCALE: SEE CHART<br>DWN BY: KSH<br>DATE: 2/14/05<br>SHEET: 1/1 |  |