



A CASE HISTORY

Anchors and Foundations for Telecom Industry

Site Owner: American Tower Corporation

Tower Supplier: Rohn
Foundation Contractor: Lomas Construction
San Antonio, TX

Location: Houma, LA (Bayou Blue Site)

Tower Type : Self-supported
Tower Height : 250'-0"
Foundation Reactions:
Maximum Compression per Leg 500.2 kips*
Maximum Uplift per Leg 437.5 kips
Maximum Groundline Shear 65.9 kips
*Plus weight of concrete pile cap of 50.0 kips

Soil Profile:
0 - 50' Very soft to soft clay
50' - 65' Firm clay to medium dense sand
65' - 85' Very soft to soft clay
85' plus Firm clay

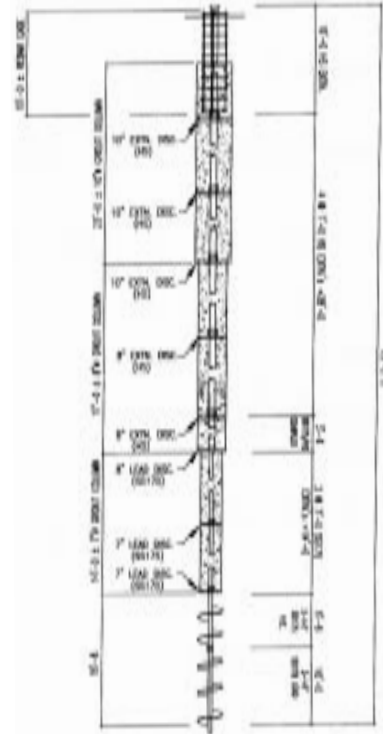
Helical Foundation Units:
Helical Pulldown® Micropiles (stepped, grouted)
Overall depth = 69'-0" (34'-0" of Type SS175 material plus 35'-0" of Type HS material)

Grout column stepped from 7" dia. to 10" dia.
(see adjacent drawing)

Ultimate Capacity (UCt) = UCb + UCf
UCt = 50.0 + 45.0 = 95.0 kips

12 Helical Pulldown® Micropiles per tower leg
Concrete pile caps for Helical Pulldown® Micropiles were connected with 18"x24" grade beams

Installation Equipment:
John Deere 410D Heavy-lift backhoe equipped with a 12,500. ft-lb drive motor with an internal torque-monitoring device



HELICAL PULLDOWN® Micropile Detail
See more detailed drawings on other side.



www.abchance.com

A.B. Chance, a Division of Hubbell Power Systems, Inc.
210 N. Allen St.
Centralia, MO 65240
Phone: 573-682-8414
Fax: 573-682-8660

©2006 Hubbell
Printed in USA
RGS

ISO 9001:2000

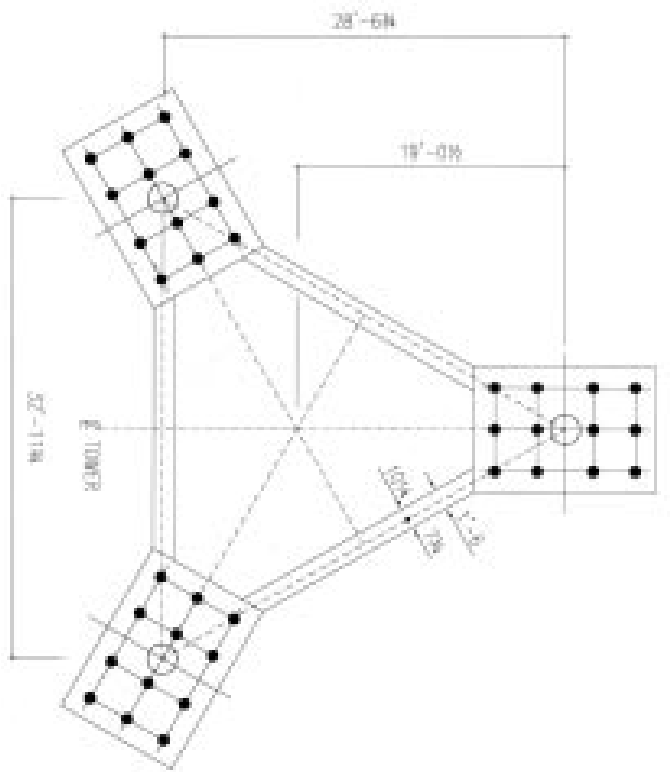
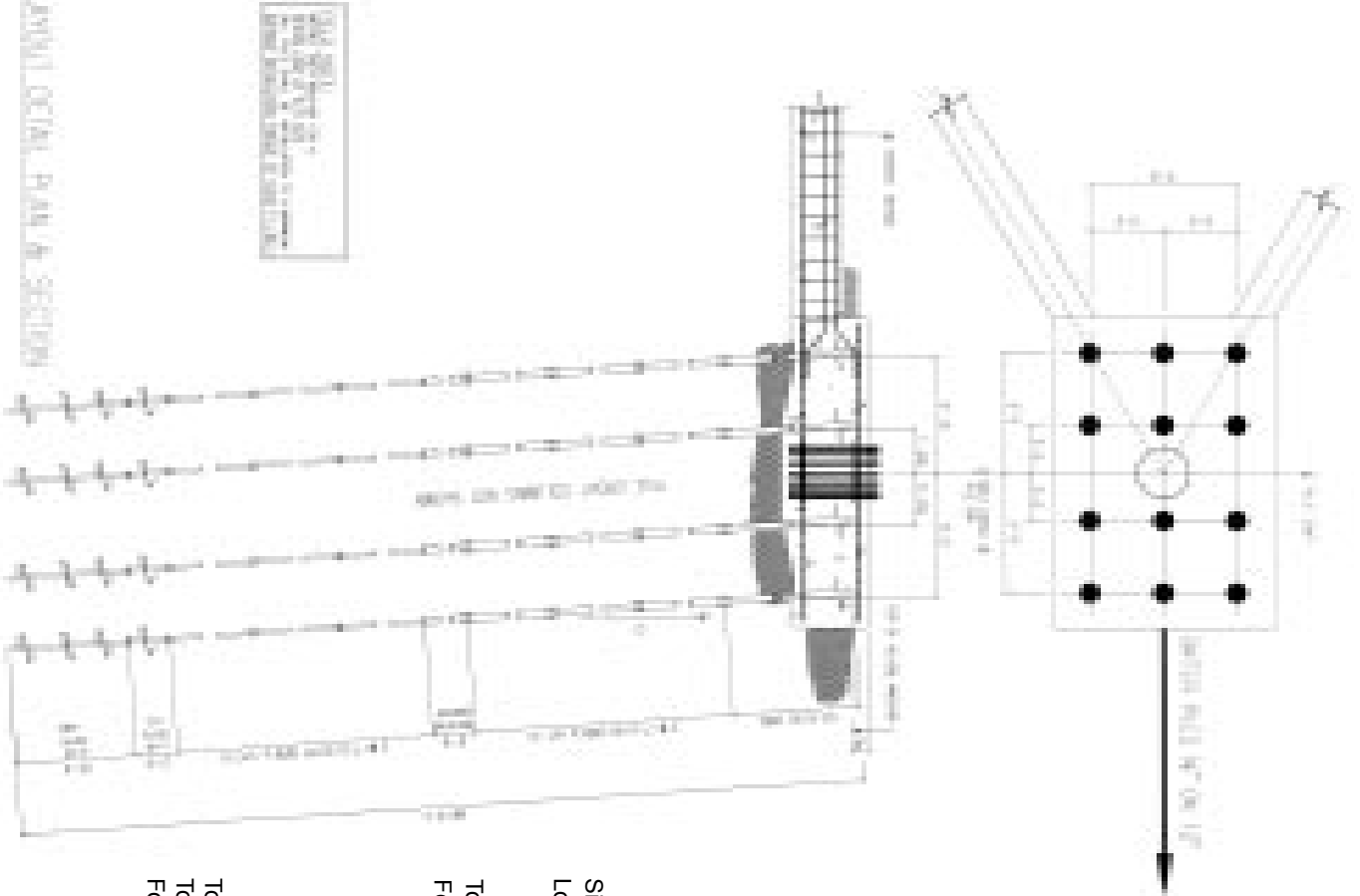


Certificate No. 001136

Because Hubbell has a policy of continuous product improvement, we reserve the right to change design and specifications without notice.

Bulletin 02-0001
Rev. 3/06

INTERNAL LAYOUT PLAN & SECTION



Site Owner: American Tower Corporation
 Location: Houma, LA (Bayou Blue Site)

Tower Supplier: Rohn
 Foundation Contractor: Lomas Construction, San Antonio, TX

- Tower Type : Self-supported
 - Tower Height : 250'-0"
 - Foundation Reactions:
 - Maximum Compression per Leg 500.2 kips*
 - Maximum Uplift per Leg 437.5 kips
 - Maximum Groundline Shear 65.9 kips
- *Plus weight of concrete pile cap of 50.0 kips