

CHANCE[®] Anchors and Foundations for Telecom Industry

CASE HISTORY

Site Owner: American Tower Corporation

Tower Supplier: Allied Tower

Location: Port Bolivar, TX

Foundation Contractor: Lomas Construction, San Antonio, TX

Tower Type : Guyed

Tower Height : 330'-0

Center (Base) Reactions:

Maximum Compression 120.3 kips*

Maximum Groundline Shear 3.6 kips

*No added pile capacity required as there was no additional weight of a concrete pile cap

Guy Design Load/Anchor 24.4 and 31.0 kips

Soil Profile:

0 - 25'	Loose to medium dense sand
25' - 35'	Loose to very loose sandy silt
35' - 45'	Medium to dense sand
45' plus	Very soft to firm clay

Center Piles:

Type HS with 15'-0' of plain extension material

Ultimate Capacity (UCt) = UCb + UCf

UCt = 61.0 + 0.0 = 61.0 kips

Four HS piles required connected with a steel grillage

Guy Anchors:

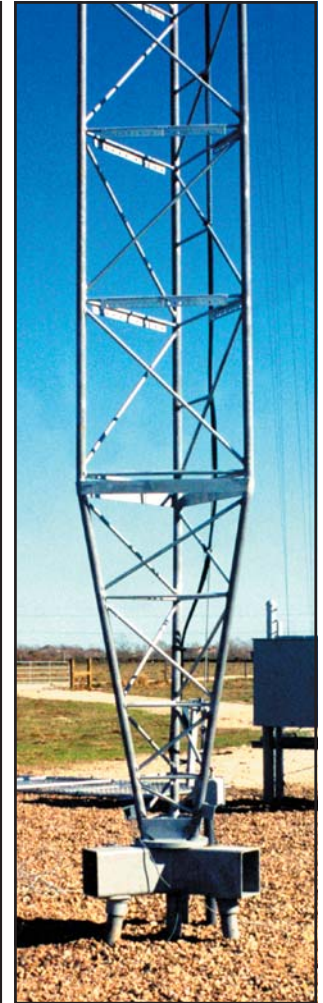
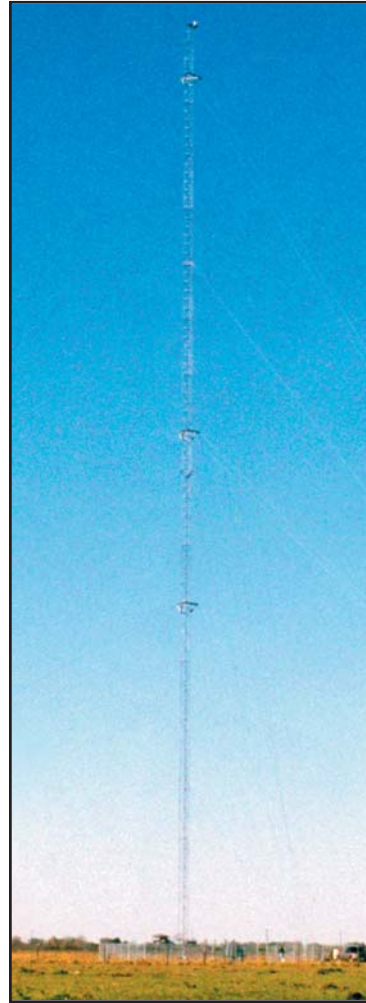
One Type SS150 anchor connected to two guy wires using a fan plate assembly.
DL = 24.4 kips/anchor

One Type SS175 anchor connected to three guy wires using a fan plate assembly.
DL = 31.0 kips/anchor

Installation Equipment:

John Deere 410D Heavy-lift backhoe equipped with a 12,500 ft-lb drive motor with an internal torque-monitoring device

Posi-Track equipped with a 15,000 ft-lb drive motor with an internal torque-monitoring device



NOTE: Because Hubbell has a policy of continuous product improvement, we reserve the right to change design and specifications without notice.



CHANCE



A. B. CHANCE COMPANY,
HUBBELL POWER SYSTEMS
Certificate Number 001136
SIC Numbers 3499, 3429, 5063

This product was manufactured in a plant whose Quality Management System is certified/registered as being in conformity with ISO 9001:2000.
Original Registration: July 1, 1992 Current Registration: Oct. 23, 2003